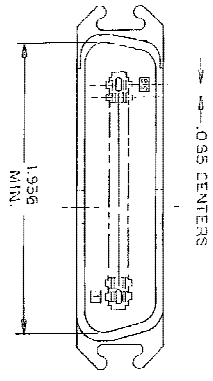
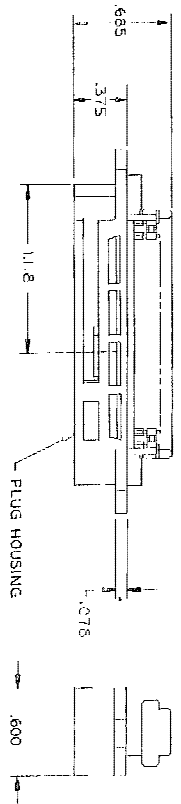
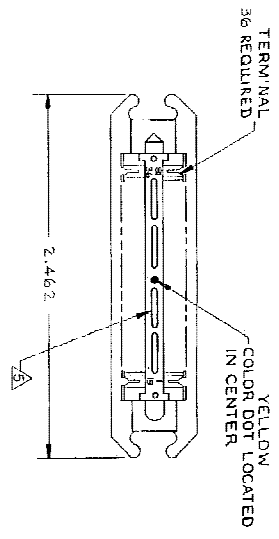


THIS DRAWING IS UNPUBLISHED
 © Copyright - BY TYCO ELECTRONICS CORPORATION. ALL RIGHTS RESERVED.

REVISED FOR PUBLICATION
 ALL RIGHTS RESERVED.

REV	DATE	DESCRIPTION	BY	CHKD
00	3-20-81	REVISED FOR ESD-06-008233	J	---
01	8/24/07		Z	---



1. THE CONTACT SURFACES OF THE TERMINALS ARE COATED WITH LUBRICANT.
2. ALL DIMENSIONS SHOWN ARE FOR REFERENCE ONLY UNLESS OTHERWISE SPECIFIED.
3. MATERIAL:
 - HOUSING - THERMOPLASTIC (BLACK)
 - TERMINALS - HIGH STRENGTH COPPER ALLOY PLATED WITH .000030 MIN GOLD, OR GOLD FLASH OVER .000030 MIN PALLADIUM NICKEL, ON CONTACT MATING SURFACE. .000050 MIN NICKEL UNDERPLATE OVER ENTIRE TERMINAL.
4. WIRE SIZE: 26, 27, OR 28 AWG 7 STRANDS OF COPPER CONDUCTORS, MAX INSULATION ϕ .045 IS ACCEPTABLE FOR MOST APPLICATIONS.

△ CORING MAY OR MAY NOT APPEAR AND IS AT THE DISCRETION OF TYCO ELECTRONICS.

THIS DRAWING IS A CONTROLLED DOCUMENT		DATE	3-20-81
DRAWN BY: A. HOLT		DATE	3-20-81
CHECKED BY: M.O. FRIEL		DATE	3-20-81
APPROVED BY: [Signature]		DATE	3-20-81
PART NO: 552470-1		DATE	3-20-81
DESCRIPTION: PLUG ASSEMBLY, 36 POSITIONS, E SLOT		DATE	3-20-81
MATERIAL: THERMOPLASTIC (BLACK)		DATE	3-20-81
DIMENSIONS: .000030 MIN GOLD		DATE	3-20-81
TOLERANCES: .000050 MIN NICKEL UNDERPLATE		DATE	3-20-81
APPLICATION SPEC: PLUG ASSEMBLY, 36 POSITIONS, E SLOT		DATE	3-20-81
CUSTOMER DRAWING: A2100779		DATE	3-20-81
SCALE: NTS		DATE	3-20-81

AMP 1471-9 REV 3/10/00

552470